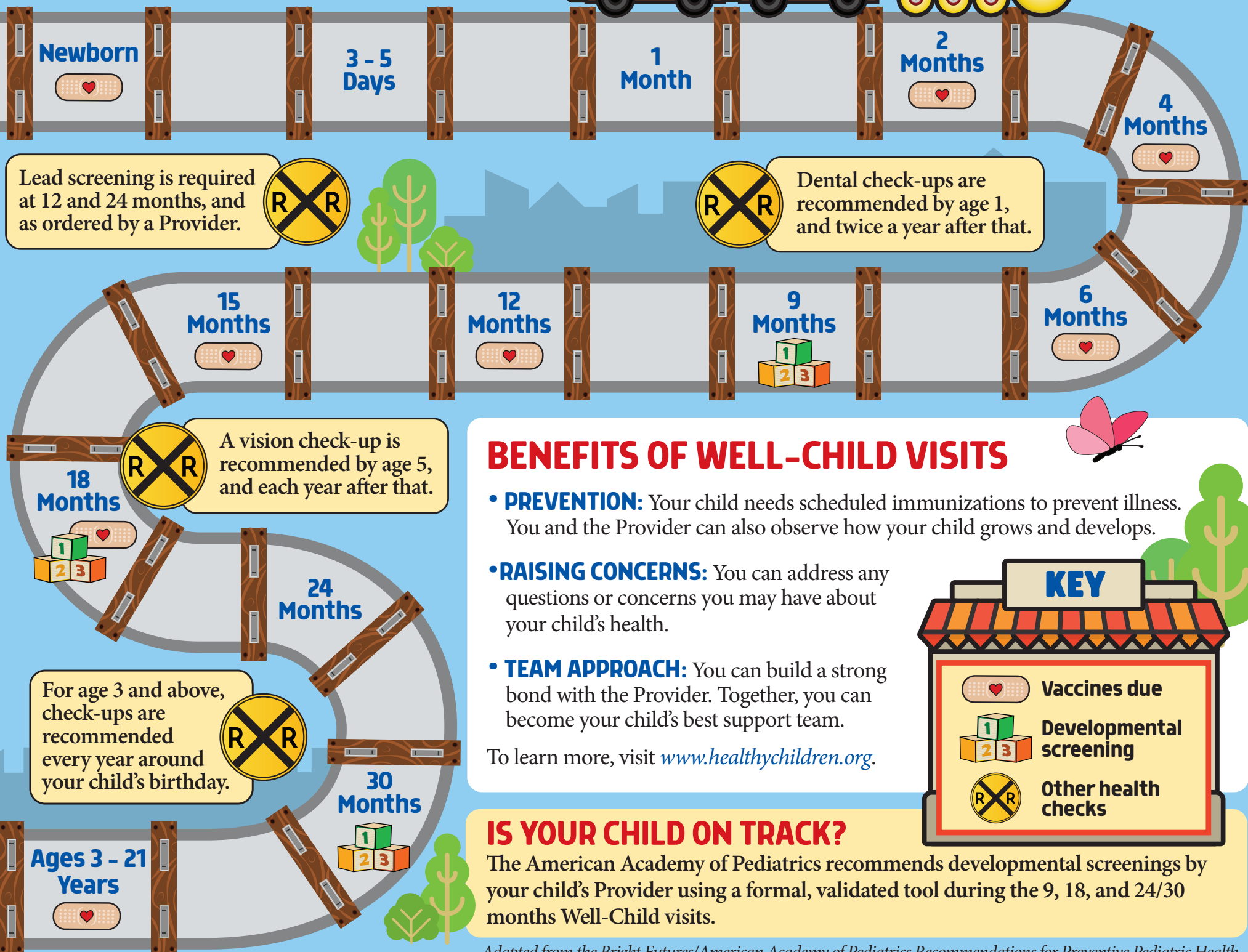


# THE WELL-CHILD JOURNEY

Well-Child visits help babies, children and teens get the care they need. Follow the Well-Child visits schedule to make sure your child stays on track to a healthy future!



## BENEFITS OF WELL-CHILD VISITS

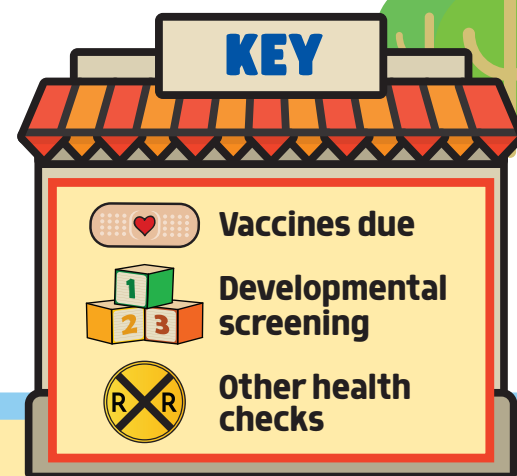
- **PREVENTION:** Your child needs scheduled immunizations to prevent illness. You and the Provider can also observe how your child grows and develops.
- **RAISING CONCERNS:** You can address any questions or concerns you may have about your child's health.
- **TEAM APPROACH:** You can build a strong bond with the Provider. Together, you can become your child's best support team.

To learn more, visit [www.healthychildren.org](http://www.healthychildren.org).

## IS YOUR CHILD ON TRACK?

The American Academy of Pediatrics recommends developmental screenings by your child's Provider using a formal, validated tool during the 9, 18, and 24/30 months Well-Child visits.

*Adapted from the Bright Futures/American Academy of Pediatrics Recommendations for Preventive Pediatric Health.*



Inland Empire Health Plan

[www.iehp.org](http://www.iehp.org)



IEHP complies with applicable Federal civil rights laws and does not discriminate on the basis of race, color, national origin, age, disability, or sex. **ATTENTION:** If you speak a language other than English, language assistance services, free of charge, are available to you. Call 1-800-440-4347 (TTY: 1-800-718-4347). IEHP cumple con las leyes federales de derechos civiles aplicables y no discrimina por motivos de raza, color, nacionalidad, edad, discapacidad o sexo. **ATENCIÓN:** si habla español, tiene a su disposición servicios gratuitos de asistencia lingüística. Llame al 1-800-440-4347 (TTY: 1-800-718-4347). IEHP 遵守適用的聯邦民權法律規定，不因種族、膚色、民族血統、年齡、殘障或性別而歧視任何人。注意：如果您使用繁體中文，您可以免費獲得語言援助服務。請致電 1-800-440-4347 (TTY: 1-800-718-4347)。

©2019 Inland Empire Health Plan. All Rights Reserved. HE-19-1285379