

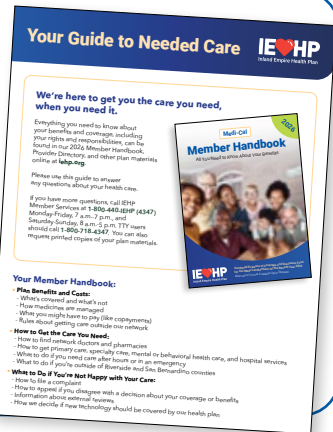
# We're here for you.

Thank you  
for being an  
IEHP member!

To get the most from your IEHP benefits, here are three things to do:

## 1 Read the [Guide to Needed Care](#)

to be familiar with your Medi-Cal benefits.



## Services for members under age 21:

Learn about [Medi-Cal for Kids & Teens: Your Medi-Cal Rights here](#). Or call us at the number below if you'd like it to be mailed to you.

## Find and access care:

The [Member Handbook](#) outlines your benefits and services, and helps you understand your coverage.

The [Provider Directory](#) lists all health care providers, specialists, and facilities for members.

To have printed copies mailed, call IEHP Member Services at **1-800-440-IEHP (4347)**, M-F, 7 a.m.-7 p.m., and Sat-Sun, 8 a.m.-8 p.m. For TTY, call **1-800-718-4347**. Or email us at [memberservices@iehp.org](mailto:memberservices@iehp.org).

If you can't reach your doctor after hours, call the IEHP 24-Hour Nurse Advice Line on your Member Card.

## 2

Connect with your doctor to get the care you need—annual check-up, lab tests and prescriptions.

## 3

Sign up for the secure [IEHP Member Portal](#) to manage your health information:



- Change your doctor
- Review status of referrals
- Check eligibility
- Print your Member Card

# IEHP

Inland Empire Health Plan

[iehp.org](http://iehp.org)

Connect with us!

